


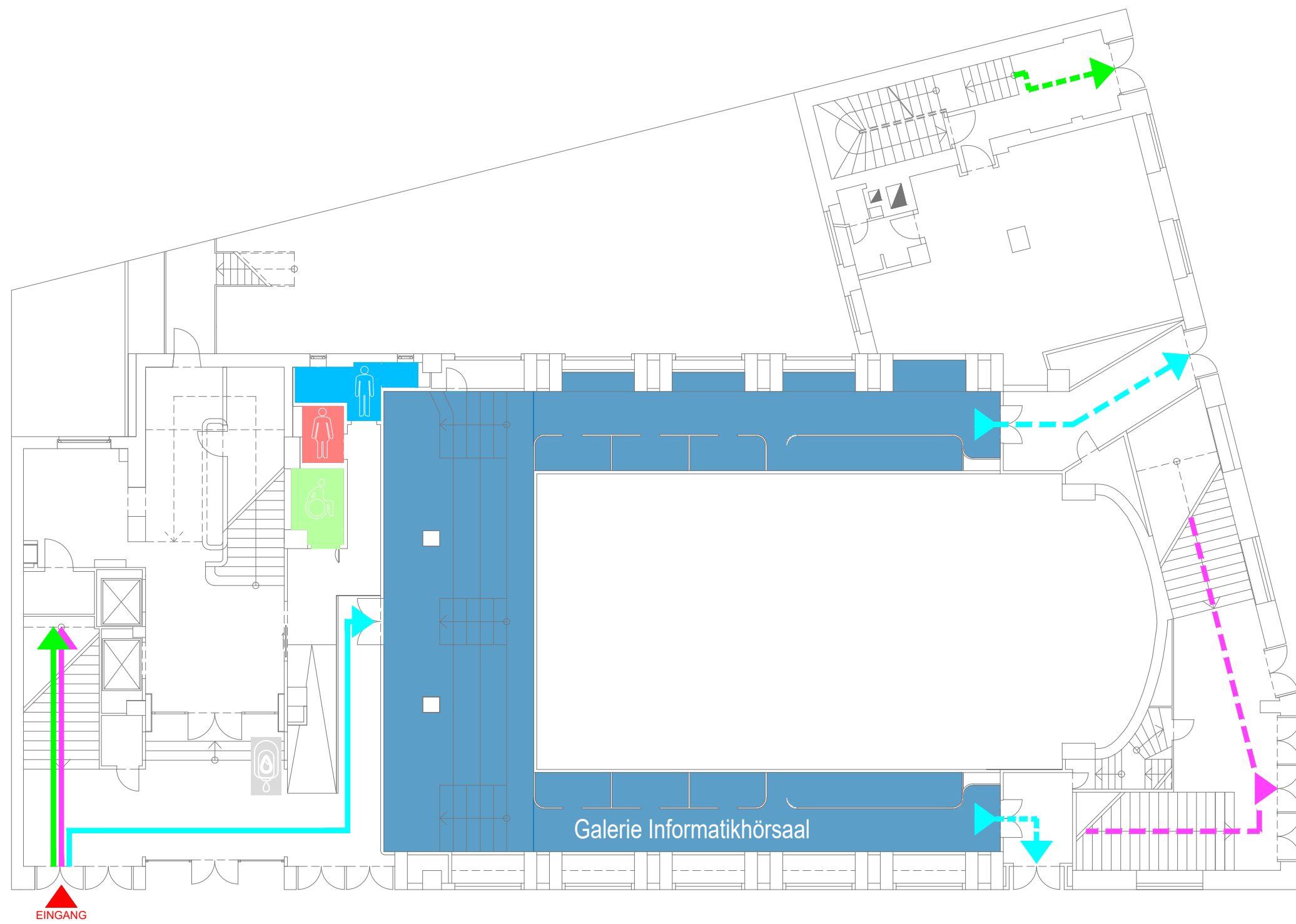






- Zugang Informatikhörsaal U1
- - - Ausgang Informatikhörsaal U1
-  WC Damen
-  WC Herren
-  Desinfektionsmittelspender



Wegführung		Treitstraße 3	
DE		1040 Wien	
1. UNTERGESCHOSS		Maßstab:	Datum:
CAFM- TEAM GUT		1:150	September 2020
caf@gut.tuwien.ac.at			



- Zugang Informatikhörsaal U1
- - - Ausgang Informatikhörsaal U1
- Zugang Informatikhörsaal EG
- - - Ausgang Informatikhörsaal EG
- Zugang TILAB 1 + 2 + 4 + 5
- - - Ausgang TILAB 1 + 2 + 4 + 5

-  WC Damen
-  WC Herren
-  WC Beh.
-  Desinfektionsmittelpender



Wegführung DE ERDGESCHOSS CAFM- TEAM GUT cafm@gut.tuwien.ac.at	Treitstraße 3 1040 Wien Maßstab: 1:150 Datum: September 2020
--	---